



INSTALLATION

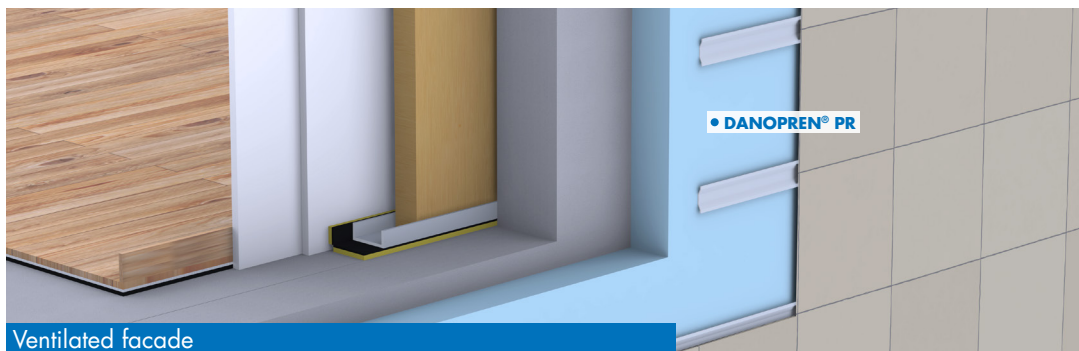
Cavity wall and ventilated facade

- The substrate wall should provide a smooth and uniform surface.
- It's not necessary to install vapor barrier, except in applications such as cold stores where the vapor barrier will be placed by the "warm" side of the insulation.
- It's not necessary to fix the boards in air chambers.
- The boards shall be fixed with a minimum of 4 mechanical fixings close to board corners and one in the center, otherwise, they shall be adhered to the substrate wall with at least 80% of it's surface with adhesive.
- The Tongue & Groove edge must be firmly pressed to be tight.
- At ventilated facades, the cladding must be fixed to the substrate wall or to an auxiliary self-supporting structure, the boards must not carry the cladding weight.

STORAGE AND PRESERVATION

- Do not expose to temperatures exceeding 75 °C.
- They must be protected from direct sunlight during storage for long periods of time.
- They can be stored outdoors, unaffected by rain, snow or ice.

COMPATIBLE SOLUTIONS



Ventilated facade



Facade with air chamber

