

An aerial photograph of a green roof. The roof is covered in green vegetation. Several large, rectangular, white skylights are installed on the roof. Two workers wearing high-visibility yellow vests and white hard hats are visible on the roof. One worker is standing near a skylight, and the other is further down. A long, thin cable or rope is stretched across the roof, with an orange buoy or marker attached to it. The overall scene depicts a construction or maintenance project on a green roof.

TIKIDAN
Building together

WATERPROOFING SOLUTIONS
For Durable and Weatherproof Buildings

A man and a woman, both wearing white hard hats and high-visibility yellow safety vests over dark business attire, are standing on a paved area in front of a modern building with a glass facade. They are holding and looking at a large set of blueprints. The man is on the left, and the woman is on the right. The background shows a clear sky and some greenery in the foreground.

ABOUT US

Tiki Tar Danosa India Pvt. Ltd., a joint venture of Tiki Tar Industries (India) and Danosa (Spain), under the brand name of "TIKIDAN" brings together, Tiki Tar's local expertise and market presence with Danosa's materials science, research and expertise, to the Indian construction industry.

At TIKIDAN, we use innovation and technology to deliver quality solutions to projects, in more than 60 countries in the world. With our combined expertise of more than 100 years, we provide holistic solutions starting from analysis, design, materials till application, ensuring quality and consistency for various construction needs. Our employee presence close to the project locations, our distributors and applicator network and our global footprint serves as a catalyst to manufacture and market unmatched quality construction chemical solutions.

Our range of construction chemicals and building material solutions comprise of Flooring, Waterproofing, Thermal Insulation, Acoustic Insulation, Sealants, and more. We put special emphasis on the development of new products and the design of new construction systems, both for new construction and renovation. All the developments are done after a careful evaluation of the sustainable use of resources and the environmental impact of construction works.

TIKIDAN products and systems are certified and evaluated technically by different European and Indian accreditation bodies. They are recognized, through the Harmonized European and Indian Standards and Technical Suitability Assessments, complying with the parameters of quality demands, for tranquility and safety of all type of constructive requirements.

RESEARCH AND DEVELOPMENT

Our excellence to step up over competition comes from our local experience, global supply network, material science, research and expertise of more than 5 decades.



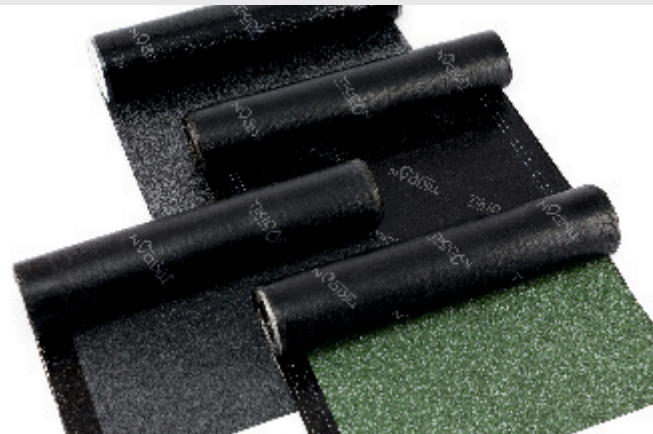
PRODUCTS RANGE

TIKIDAN brings to its customers, an extensive range of waterproofing products and solutions aimed at covering different technical requirements of a building. These solutions not only safeguard the structural integrity of the building, but also protects the aesthetics and performance in the long run.

THE HYDROSTOP RANGE

The HYDROSTOP range membranes are manufactured from modified bitumen with APP (Atactic-polypropylene) plastomeric polymers that gives the following properties to the membrane:

- Excellent resistance at high temperature
- High mechanical strength
- Good flexibility conforming to geometries



THE POLYDAN RANGE

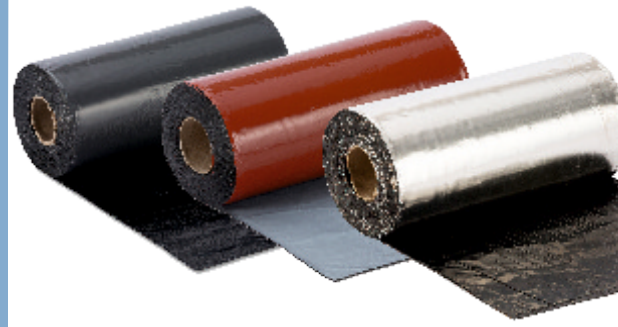
The POLYDAN range membranes are manufactured from modified bitumen with SBS (styrene-butadiene-styrene) elastomeric polymers that gives the following properties to the membrane:

- Elastic behaviour
- Self-healing properties
- Excellent resistance at high and low temperatures
- Excellent bonding with primed surface
- Easy to repair in the event of accidental damage
- High product durability

THE SELFDAN RANGE

The SELFDAN range membranes are manufactured from modified bitumen with SBS (styrene-butadiene-styrene) elastomeric polymers along with self-adhesive bottom finish that gives the following properties to the membrane:

- Elastic behaviour
- Self-healing properties
- Easy and fast application, no torch is necessary
- Easy to apply at complex geometries
- Excellent electrical resistance properties



BITUMEN PRIMER

Primers enhances bond of polymer modified bituminous waterproofing membranes.

TIKI PRIME W is an emulsion of special grade bitumen, minerals and water in paste form for use as primer.

TIKI PRIME S is quick drying low viscosity oil based bituminous primer in liquid form with high penetrating power.

Uses:









It is used as primer on concrete, masonry, metal, wood and stone surfaces for sealing substrate pores and promote adhesion.



AREAS OF APPLICATION

- Basement Floors
- Retaining Walls
- Blindside Walls
- Podium Parking
- Podium Landscape
- Planter Box
- Cut and Cover Tunnels
- Balconies
- Sloping Roof
- Metal Deck Roof
- Terraces
- Green Roof

TERRACE AND PODIUM WATERPROOFING: BRICKBAT COBA VS BITUMINOUS MEMBRANE

PARAMETERS		
 Dead Load on structure	<ul style="list-style-type: none"> • Adds High Dead Load between 300-600 kg./m² • Requires high dimensions of columns and beams • Increases cost of project 	<ul style="list-style-type: none"> • Adds negligible dead load, 8-9 kg./m² • Requires low dimensions of columns and beams • Reduces cost of project
 Time Required	<ul style="list-style-type: none"> • Requires high Manpower • Time consuming process • 45 days requires to cover 1000 sq.m. area 	<ul style="list-style-type: none"> • Requires low Manpower • Less time required • 5 days required to cover 1000 sq.m. area
 Quality Issues	<ul style="list-style-type: none"> • Material required for brickbat coba i.e. bricks, cement, etc., comes from different sources therefore no uniformity in treatment • No test certificates are available • Mixing process may vary depending upon the labours • Curing may not be proper 	<ul style="list-style-type: none"> • Membrane comes from single source therefore uniformity can be maintained • Test certificates are available • No on site process required for execution • No curing required
 Warranty	No warranty	10 years warranty
 Maintenance	Difficult to repair and maintain	Easy to repair and maintain
 Slope	Slope is made by concrete mixture, therefore results into high material consumption	Slope can be done by tiling or china mosaic
 Price	"X"	X -25% saving on waterproofing huge saving on load bearing structure cost



GENERAL INSTALLATION PROCEDURE

The TIKIDAN modified bituminous membrane product range comprises of bituminous mastic, a reinforcement, and different exterior or interior finishes. There is a range of TIKIDAN formulations for bituminous membrane.



SURFACE PREPARATION



APPLICATION OF PRIMER



ALIGNMENT & REALIGNMENT OF MEMBRANE ROLLS



MAINTAIN OVERLAPS AS PER MARKINGS



TORCHING AND LAYING OF MEMBRANE



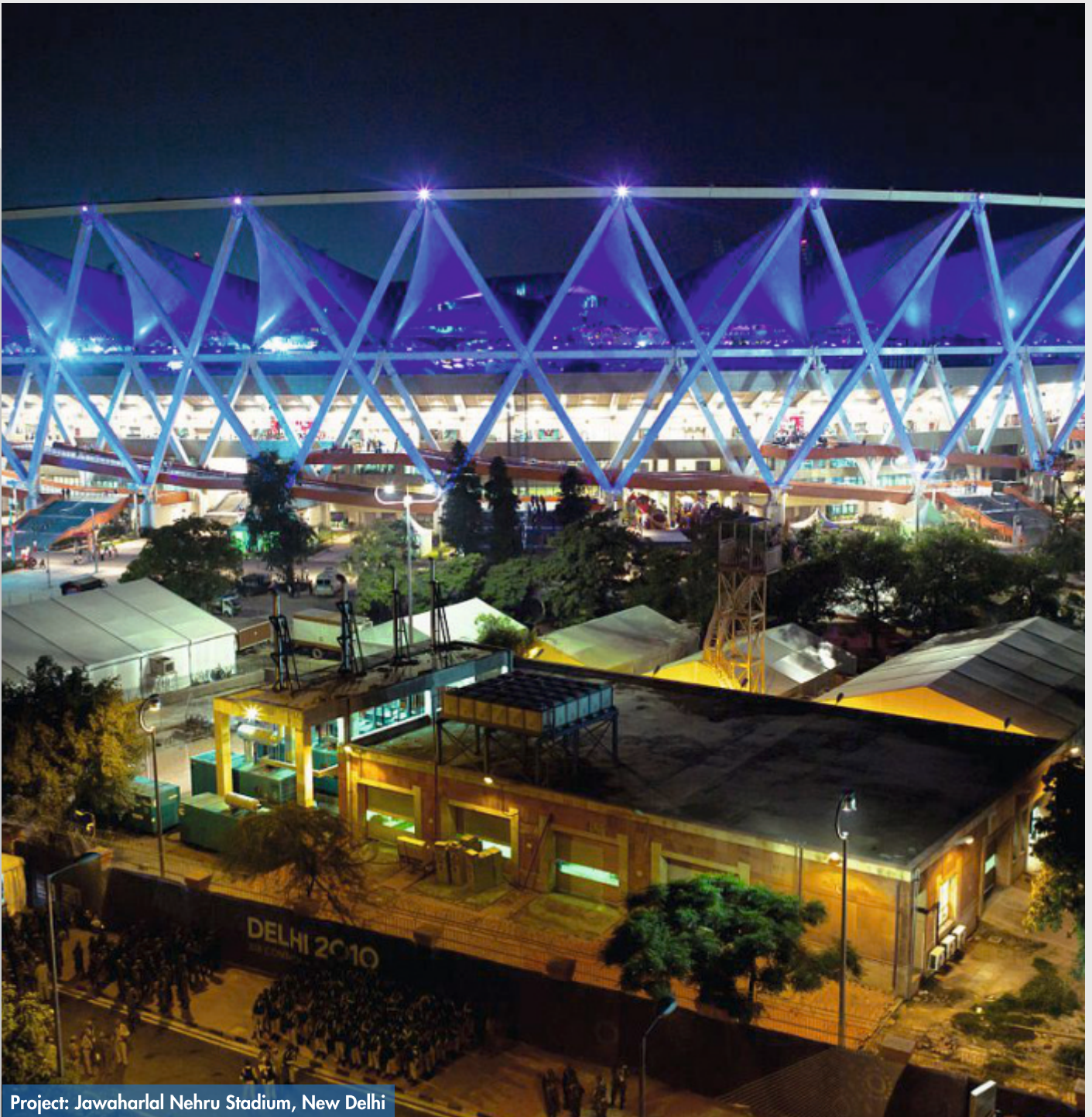
WATERTIGHT SEALING OF SEAMS



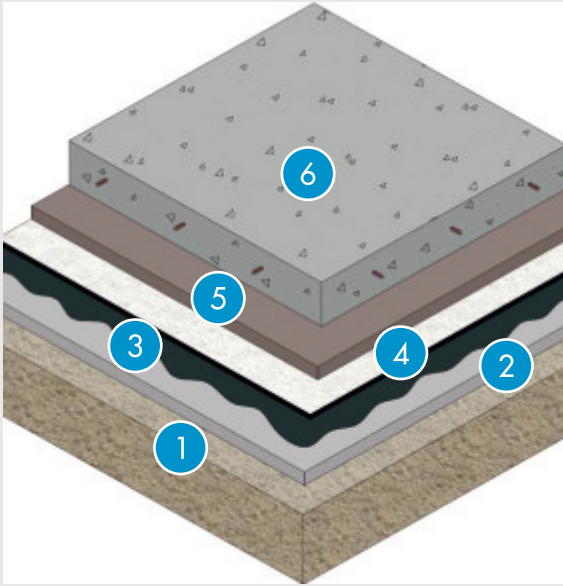
OUR EXTENSIVE RANGE OF ADVANCED SOLUTIONS

Whether for a new build or refurbishment project, TIKIDAN provides a range of advanced waterproofing products and solutions to suit your project requirements. Typically, your system choice will depend on a combination of many factors such as building use, access to project, site (or project) restrictions, performance requirements and also budget constraints. Check TIKIDAN solutions on the subsequent pages for a brief overview of our key waterproofing systems.

Investing in quality waterproofing systems leads to fewer building maintenance and restoration costs, as well as safeguard the building's structural safety and usability conditions.

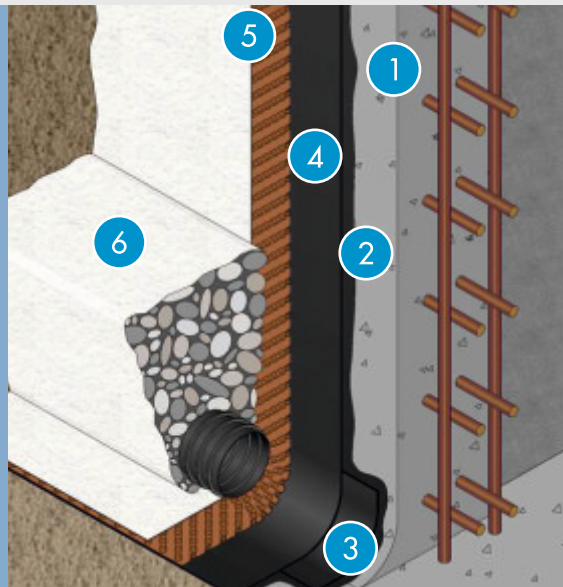


Project: Jawaharlal Nehru Stadium, New Delhi



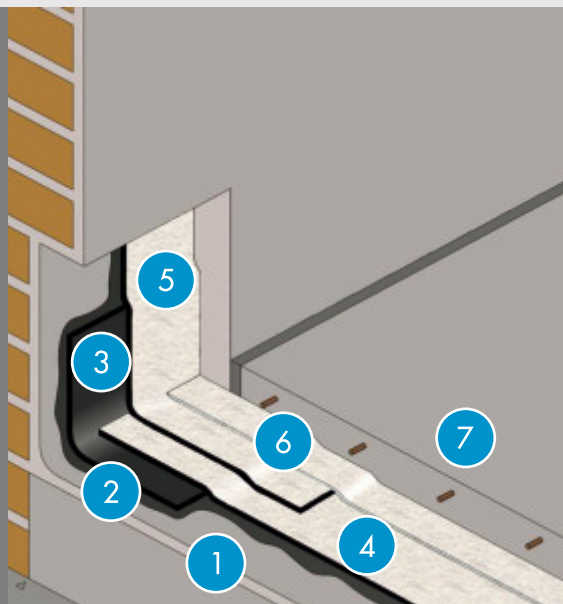
FOR BASEMENT

1. Compacted Earth
2. Blinding Concrete
3. TIKI PRIME W
4. HYDROSTOP PLUS 4PY-SP/
POLYDAN 4 BASEMENT SBS
5. Protection Screed
6. Raft Slab



FOR RETAINING WALL

1. R.C.C. Wall
2. TIKI PRIME S
3. HYDRSOTOP PLUS 3PY-P /
SELDAN PE PLUS
4. HYDROSTOP PLUS 4PY-P /
SELDAN PE PLUS
5. DANODREN H1.5 PLUS
6. DANOFELT PY I-200



FOR PODIUM PARKING

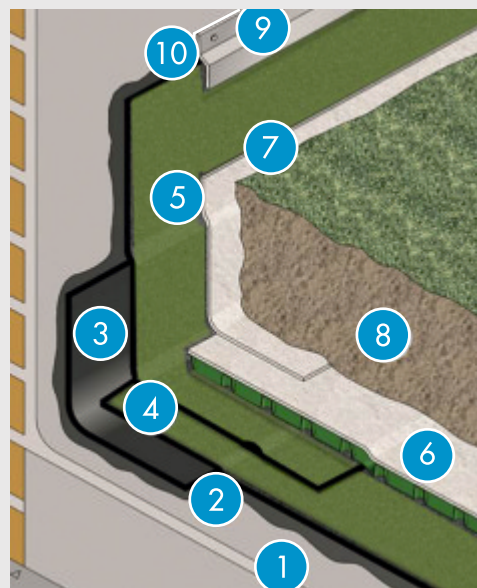
1. Base Support
2. TIKI PRIME W
3. HYDROSTOP PLUS 3PY-P
4. HYDROSTOP PLUS 4PY-SP/
POLYDAN 48P PARKING
5. HYDROSTOP PLUS 4PY-SP/
POLYDAN 48P PARKING
6. DANOFELT PY I-200
7. Rolling Pavement



Project: World one- Lodha, Mumbai

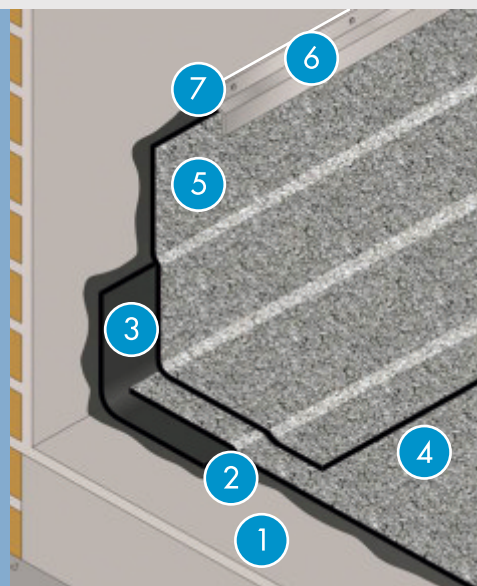
FOR GREEN ROOFS

1. Base Support
2. TIKI PRIME W
3. HYDROSTOP PLUS 3PY-P
4. HYDROSTOP GARDEN
5. HYDROSTOP GARDEN
6. DANODREN GARDEN
7. DANOFELT PY I-200
8. Vegetative Soil
9. Metallic Profile
10. TIKISEAL PU 25



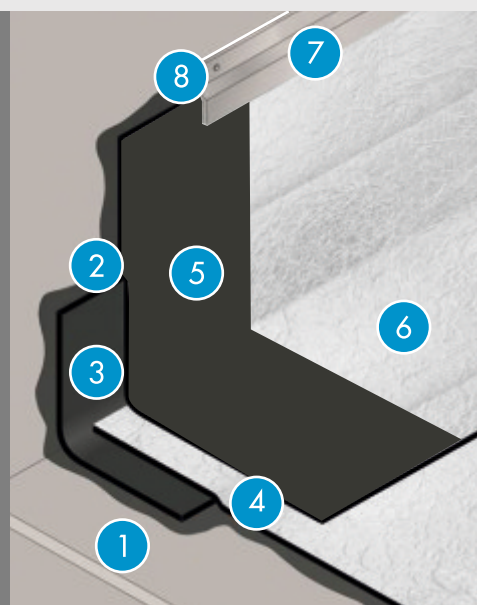
FOR NON-WAKABLE TERRACE

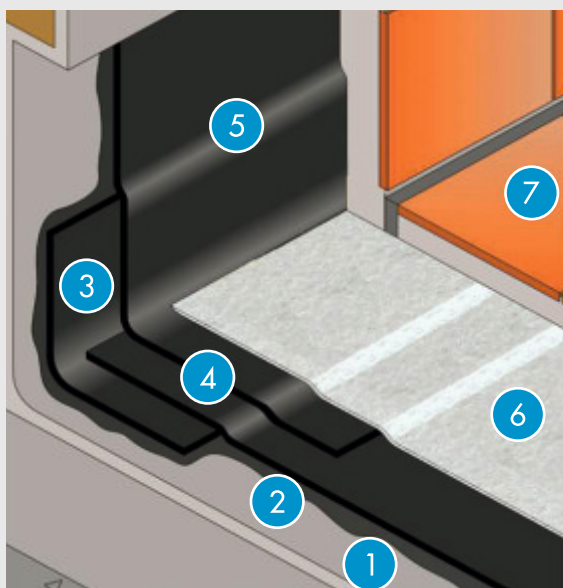
1. Base Support
2. TIKI PRIME W
3. HYDROSTOP PLUS 3PY-P
4. HYDROSTOP PLUS 4PY-M
5. HYDROSTOP PLUS 4PY-M
6. Metallic Profile
7. TIKISEAL PU 25



FOR TERRACE

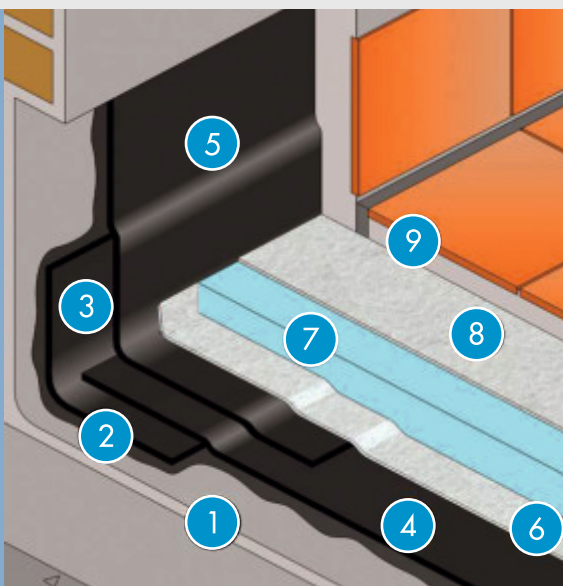
1. Base Support
2. TIKI PRIME W
3. HYDROSTOP PLUS 3PY-P
4. HYDROSTOP PLUS 4PY-P
5. HYDROSTOP PLUS 4PY-P
6. TIKI FLASH
7. Metallic Profile
8. TIKISEAL PU 25





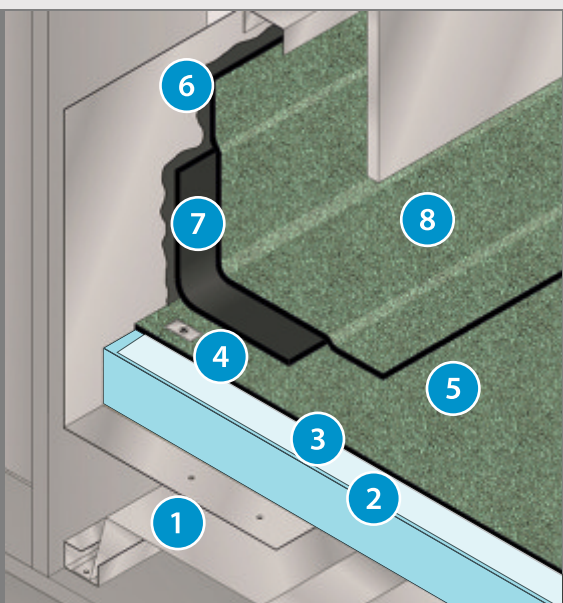
FOR WALKABLE TERRACE

1. Base Support
2. TIKI PRIME W
3. HYDROSTOP PLUS 3PY-P
4. HYDROSTOP PLUS 4PY-P
5. HYDROSTOP PLUS 4PY-P
6. DANOFELT PY I-200
7. Tile Finish



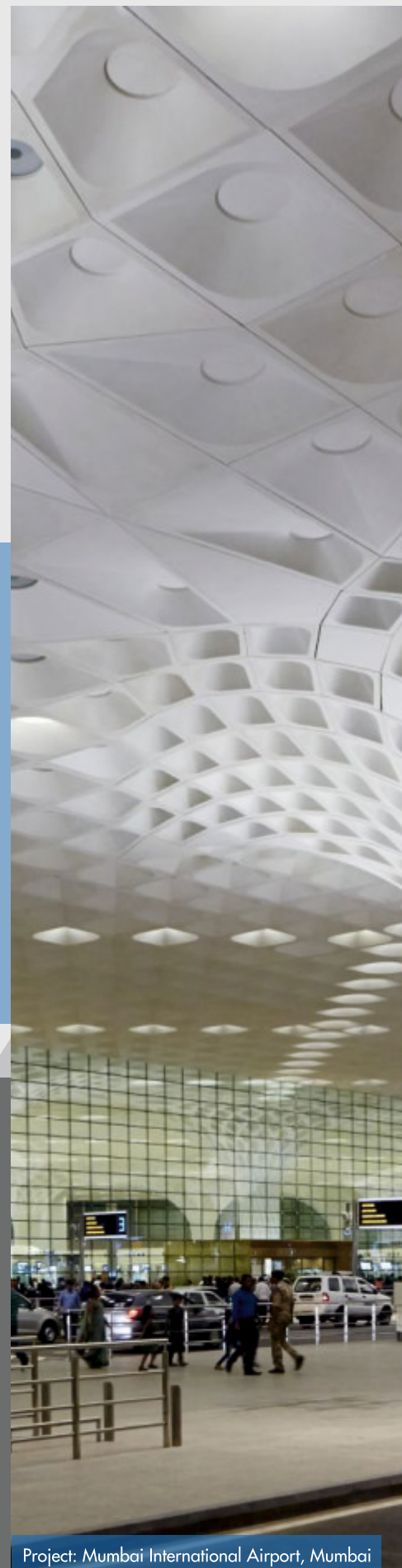
FOR TERRACE WITH THERMAL INSULATION

1. Base Support
2. TIKI PRIME W
3. HYDROSTOP PLUS 3PY-P
4. HYDROSTOP PLUS 4PY-P
5. HYDROSTOP PLUS 4PY-P
6. DANOFELT PY I-200
7. DANOPREN TR 50
8. DANOFELT PY I-200
9. Tile Finish



FOR METAL DECKS

1. Metal Deck
2. Rockwool / XPS Board DANOPREN
3. DANOFELT PY I-200
4. Mechanical Fastener
5. HYDROSTOP PLUS 4PY-M-MF
6. TIKI PRIME S
7. HYDROSTOP PLUS 3PY-P
8. HYDROSTOP PLUS 4PY-M-MF



Project: Mumbai International Airport, Mumbai

DELIVERING EXCELLENCE THROUGH QUALITY AND INNOVATIONS

Our commitment to continued innovation and highest quality product is evidenced by our investment in technical support, specifications and onsite services.

TECHNICAL SUPPORT & SPECIFICATION

We have a dedicated in-house technical team to support your project specification. From concept, design and specification through to delivery of the project and completion on site, we are building together every step of the way.

ON-SITE TECHNICAL SERVICES

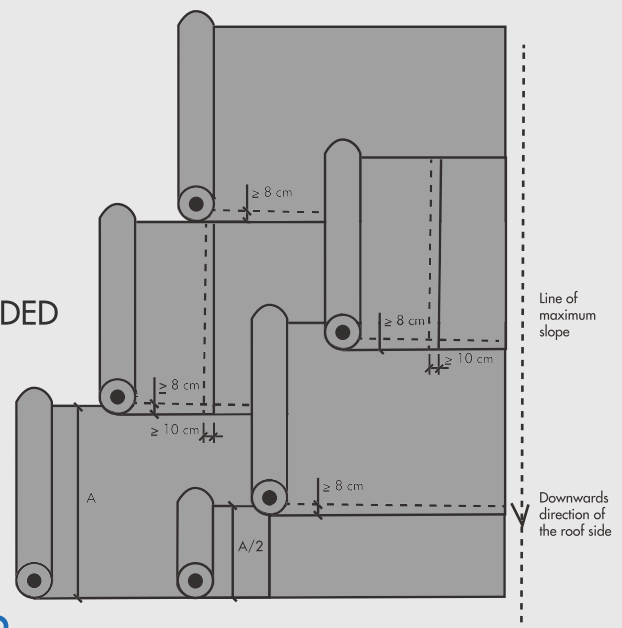
Whether it's a new build project or a refurbishment project, our team will produce a full Technical Report detailing the visit and any subsequent recommendations.



WITH OUR RECOMMENDED SOLUTION



DOUBLE LAYER WATERPROOFING



TIKIDAN

Building together

Providing holistic solutions for

- Waterproofing
- Flooring
- Thermal Insulation
- Acoustic Insulation
- Sealants
- Drainage and Protection Systems

TIKI TAR DANOSA (INDIA) PRIVATE LIMITED

CIN: U23209GJ2012PTC071647

Add: Tiki Tar Estate, Village Road, Bhandup (West), Mumbai-400 078, India.

Other Locations: SPAIN | PORTUGAL | FRANCE | UK | MOROCCO | MEXICO

Tel: +91 22 4126 6666

Fax: +91 22 2566 7830



www.tikidan.in

